

# NMAT 2008 Actual paper

(Memory based)



**CETking Workshops**  
**Increase your score**  
**by 20 Marks**

CETking Workshops: Andheri • Vashi • Thane • Pune  
 Next batch starting soon.. call now!

<p><b>CET &amp; SNAP Workshops</b>                  Stuck with your SNAP &amp; CET scores? Increase your score by 20 marks with SNAPking's Strategy and Shortcuts workshops by toppers of JBIMS</p>	<p><b>SNAPking &amp; CETking Mocksengineering</b>                  CETking Mocks program to maximise your scores                  Mocks based on actual CET and SNAP papers not an inch tough or easy</p>
<p><b>GDPI Clinic</b>                  Get us a call and we will convert it for you                  CETking GDPI program is made to help you clear the final hurdle in joining the top B Schools</p>	<p><b>CET Strategy – talk to experts</b>                  To discuss your CET &amp; SNAP strategies call CET topper                  Rahul Sir (JBIMS Alumni) on 9820500380 now or cetking.com</p>

**Increase your score by 20 marks with CETking - Workshops | Mocks**

SNAPking - First coaching institute dedicated for SNAP by SIBM, JBIMS alumni and students  
 Try our free workshop with JBIMS topper to feel the difference Call now 9820500380  
 SNAPking Workshops • SNAPking Mocks • CETking Workshops • CETking Mocks • GDPI Clinic  
 For details log on to [www.cetking.com](http://www.cetking.com) or Call 9820500380 Andheri • Vashi • Thane • Pune

## SECTION 1

Q.1-15. Read the following passage carefully and answer the questions given below it. Certain words/ phrases are printed in hold to help you to locate them while answering some of the questions.

How can one ignite the young minds? How can one attract and involve the young in the task of nation building? Only a united vision launched with renewed vigour will bring the young force into action.

The subject of transparency and values brings to my mind Gandhiji. Mahatma Gandhi used to hold a prayer meeting at a fixed time in the evening. After the prayers there would be a collection of voluntary gifts for the welfare of harijans and others. The devotees of Gandhiji used to collect whatever was given by the people of all sections and this collection was counted by a few members suggested by Gandhiji. The amount so collected would be informed to Gandhiji before dinner. The next day, a man from the bank would come to collect the money for deposit.

Once the man reported that there was a shortage of a few paise in the money handed over to him and the amount informed to Gandhiji the previous night. Gandhiji, on hearing this, was so upset that he went on fast saying that this is a poor man's donation and we have no business to lose any of it. Well, in the same country, we are witnessing the best and the worst. We should all, particularly the young generation, launch a movement for a transparent India, just as our fathers fought for our freedom. Transparency is a cornerstone of development.

We have spoken about our progress since independence. We are self-sufficient in agriculture, lead the world in milk production, have made enormous strides in industrial development and so on. However, we are still a developing country, one among hundreds. As such, it is important to understand where we stand in terms of competitiveness. A country's competitiveness is defined as 'the ability of a national economy to achieve sustained high rates of economic growth'. By that yardstick, according to the global competitiveness report prepared by the World Economic Forum, Singapore is first, the USA is second, Hong Kong is third, Taiwan is fourth, Canada is fifth, the UK is eighth, France twenty-third, Germany twenty-fifth and India fifty-ninth,

What decides world competitiveness? It is a combination of the progressiveness of industry, the push for improved technology and the status of governmental deregulation. In terms of overall GDP size, we are twelfth in the world; in terms of per capita GDP we are fifty-seventh. Is this status acceptable to us? Especially to the young? I believe, we should work for fourth or fifth position in terms of GDP as well as in respect of competitiveness. The target year should be 2020 and we should aim for a higher position afterwards. We have discussed some of the strategies and tools that can help us acquire the desired status.

To reiterate, a knowledge society can form the foundation for such a vision. I am glad that the Planning Commission has taken a lead in generating a roadmap for us to become such a society. Where do we start? A number of new states have been created recently and these provide an excellent opportunity to begin. These states are poorly developed in spite of their abundant natural resources. There is widespread poverty though their people toil and sweat. What really prevents us from leaving the beaten track and venturing upon a new path? The question is not who would allow us but rather, who can stop us?

Q1. By narrating the incidence from Gandhiji's life the author wants to emphasize -

- (1) how Gandhiji was honest and transparent in his actions
- (2) the importance Gandhiji attached to transparency in public life
- (3) how even a few pennies donated by poor people can be very useful.

**Increase your score by 20 marks with CETking - Workshops | Mocks**

SNAPking - First coaching institute dedicated for SNAP by SIBM, JBIMS alumni and students  
Try our free workshop with JBIMS topper to feel the difference Call now 9820500380  
SNAPking Workshops • SNAPking Mocks • CETking Workshops • CETking Mocks • GDPI Clinic  
For details log on to [www.cetking.com](http://www.cetking.com) or Call 9820500380 Andheri • Vashi • Thane • Pune

- (4) that Gandhiji used his weapon of going on fast to set things in order  
(5) None of these

Q2. What according to the author is the expected end result of a united vision launched with renewed vigour ?

- (1) To ignite the young minds  
(2) To attract the young minds to the author's Ideology  
(3) To involve the youth into action  
(4) To channelize the energy of the youth for the country's progress'  
(5) To inspire the youth for action to achieve transparency

Q.3. Which of the following can be inferred from the contents of the passage? "

- (A) The author is satisfied about the country's progress since independence.  
(B) The youth are dissatisfied about the country's astounding progress.  
(C) The planning, strategies, tools, etc. are in our favour to achieve progress in desired time

limit.

- (1) All the three'                      (2) A and B only-  
(3) B and C only                      (4) A and C only  
(5) None of these

Q.4. Which of the following seems to be mostly TRUE about the author's view/attitude towards the country's progress ?

- (1) Reasonably optimistic  
(2) Unduly hopeful  
(3) Boastful about country's national resources  
(4) Exorbitant and unrealistic expectations  
(5) None of these

Q.5. The last sentence (question) on the passage means-

- (1) our strong willpower and sustained efforts will lead us to achieve desired goals  
(2) we should not seek anybody's permission to think about the road-map for our . country's development  
(3) There is no other country to compete with . our country and .stop our progress  
(4) No other country can stop us from being a developing country in the world  
(5) None of these

Q.6. Which of the following is the author's optimistic view about the newly formed states. ?

(A) Although the people of these states are poor, their toil and sweat have made the states abundant in resources.

(B) The abundant natural 'resources coupled with people's strong willpower and efforts provide an excellent opportunity, for progress.

(C) The -poverty of the people in these states cannot prevent us from\ thinking of newer avenues for progress.

- (1) Only A                      (2) Only B  
(3) Only C •                      (4) A and B only                      (5) Band C only

Q.7. What is the criterion that determines a country' competitiveness ?

- (1 ) Country's high rate of economic growth  
(2) The size of country's overall GDP

**Increase your score by 20 marks with CETking - Workshops | Mocks**

SNAPking - First coaching institute dedicated for SNAP by SIBM, JBIMS alumni and students

Try our free workshop with JBIMS topper to feel the difference Call now 9820500380

SNAPking Workshops • SNAPking Mocks • CETking Workshops • CETking Mocks • GDPI Clinic

For details log on to [www.cetking.com](http://www.cetking.com) or Call 9820500380

Andheri • Vashi • Thane • Pune

- (3) Rate of industrial development of the country
- (4) Improved technology of the country
- (5) None of these

Q.8. Which of the following is one of the suggestions by the author to lead our country to progress ?

- (1) The Planning Commission may lead in generating road map.
- (2) World Economic Forum should review and rank our country among the top ten progressive nations
- (3) For progress, our country should fix 202 as the year to achieve desired target
- (4) We should explore novel ways and exploit fully our rich human and material resources
- (5) None of these

Q.9. What does the word 'However' (4th para) signify ?

- (1) Our country has succeeded in achieving the desired status
- (2) Despite adverse circumstances, our country has accomplished desired goals .
- (3) In spite of our progress, we are yet to become a developed country
- (4) Our progress has led us to a reasonably high position among other countries
- (5) None of these

Q.10. Which of the following has/have transformed our country into a developed nation?

- (A) Our self-sufficiency in agriculture
- (B) Our achievement in record milk production
- (C) Our appreciable rate of industrial development
- (1) All the three
- (2) A and B only
- (3) Band C only
- (4) A and C only
- (5) Data Inadequate

Q.11-12. Choose the word/group a/words which is most OPPOSITE in meaning a/the word printed in bold as used in the passage.

Q11. Enormous

- (1) Gigantic
- (2) Huge
- (3) Insignificant
- (4) Meticulous
- (5) Short-term

Q.12. Transparency

- (1) Clarity
- (2) Fairness
- (3) Dullness
- (4) Gloom
- (5) Concealment

Q.13-15. Choose the word/group of words which is most nearly the SAME in meaning as the word given in bold as used in the passage.

Q.13. Yardstick

- (1) unit of measurement
- (2) criterion
- (3) application
- (4) consideration
- (5) normality

Q.14. Ignite

**Increase your score by 20 marks with CETking - Workshops | Mocks**

- (1) set on fire (2) inspire  
(3) respond (4) move into action .  
(5) aggravate

Q.16-25. In the following passage, there are blanks, each of which has been numbered. These numbers are printed below. the passage and against each, five words are suggested, one of which fits the blank appropriately. Find out the appropriate word in each case.

The (16) of science and spirituality will be (17) to take the benefit of science and technology to (18). In 1911, Sri Aurobindo wrote in the Song' of Humanity: 'A (19) will come when the Indian mind will shake off the darkness that has (20) upon it, (21) to think or hold opinions at second and third hand and . (22) its right to judge and enquire with perfect . freedom into the meaning of its own culture and tradition.' That is the future we (23) to work towards (24) we shake off the (25) of . poverty.

- Q.16. (1) contribution (2) effect  
(3) unification (4) segregation  
(5) advent

- Q.17. (1) essential (2) desirable  
(3) avoidable (4) dismal  
(5) meaningful

- Q.18. (1) existence (2) development  
(3) mankind (4) nature  
(5) progress

- Q.19.(1)decision (2) dawn  
(3) boon (4) time  
(5)solution

- Q.20.(1) encircled (2) centred  
(3) spread (4) enlightened  
(5)fallen

- Q.21.(1) engage (2) cease  
(3) determine (4) resort  
(5)undertake

- Q.22.(1) invent (2) reassert  
(3) forego (4) donate  
(5)extend

- Q.23.(1) need (2) avoid  
(3) remind (4) claim  
(5)aspire

- Q.2.(1) lest (2) otherwise  
(3) before (4) because  
(5)as

- Q.25.(1) insurgence (2) onslaught

**Increase your score by 20 marks with CETking - Workshops | Mocks**

SNAPking - First coaching institute dedicated for SNAP by SIBM, JBIMS alumni and students

Try our free workshop with JBIMS topper to feel the difference Call now 9820500380

SNAPking Workshops • SNAPking Mocks • CETking Workshops • CETking Mocks • GDPI Clinic

For details log on to [www.cetking.com](http://www.cetking.com) or Call 9820500380

Andheri • Vashi • Thane • Pune

- (3) miracles      (4) shackles  
(5) advent

Q.26-30. Rearrange the following six sentences (A), (B), (C), (D), (E) and (F) in the proper sequence to form a meaningful paragraph; then answer the questions given below them.

- (A) The industry of a developed country should cater to the domestic market of the country.  
(B) Indian industry has also to show the same competitiveness and innovation so that we can have our own multinationals.  
(C) It should also aim for a large market outside . the country.  
(D) An important aspect of a developed Country is global competitiveness of its industry,  
(E) Hence its contribution to GOP is also very large.  
(F) It is no doubt necessary but not sufficient.

Q.26. Which of the following should be the SECOND statement after rearrangement?

- (1) A    (2) B  
(3) C ,    (4) D  
(5) E

Q.27. Which of the following should be the SIXTH (LAST) statement after rearrangement?

- (1) A    (2) B  
(3) C    (4).D  
(5) E

Q.28. Which of the following should be the FIFTH statement after rearrangement?

- (1) A    (2) B  
(3) C    (4).D  
(5) E

Q.29. Which of the following should be the FOURTH' statement after rearrangement?

- (1) A    (2) B  
(3) C    (4).D  
(5) E

Q.30. Which of the following should be the FIRST statement after rearrangement?

- (1) A    (2) B  
(3) C    (4).D  
(5) E

Q.31-35 Which of the phrases (1), (2), (3) and (4) . given below should replace the phrase given in bold in the following sentence to make the sentence grammatically correct. If the sentence is correct as it is and no correction is required, mark (5) as the answer.

Q.31. . Anyone can fill up the application on-line If you have access to internet.

- (1) if you have had access, to  
(2) if you were to access  
(3) if you would like to have access for  
(4) if he or she has access to  
(5) No correction required

**Increase your score by 20 marks with CETking - Workshops | Mocks**

SNAPking - First coaching institute dedicated for SNAP by SIBM, JBIMS alumni and students  
Try our free workshop with JBIMS topper to feel the difference Call now 9820500380  
SNAPking Workshops • SNAPking Mocks • CETking Workshops • CETking Mocks • GDPI Clinic  
For details log on to [www.cetking.com](http://www.cetking.com) or Call 9820500380      Andheri • Vashi • Thane • Pune

Q.32. Except for you and me, everyone confronted with the leader.

- (1) Except for you and me, everyone had confronted
- (2) Excepting you' and I everyone else had been confronted
- (3) Except for we, everyone had to confront
- (4) Everyone had been confronted, except we two
- (5) No correction required

Q.33. If I would have realized how close I was to the accident site, I would have suffered a heart attack.

- (1) Had I been realized how close
- (2) If I had realized how to close
- (3) I would have realized if I was close
- (4) Had I realized how close
- (5) No correction required

Q.34. On discrete enquiry, the officials found that the storekeeper hadn't hardly have any of those kind of compact discs.

- (1) had hardly any of those kinds
- (2) hadn't hardly have any of those kinds
- (3) didn't hardly have any of those kind
- (4) had not have any of hardly those kind
- (5) No correction required

Q.35. If you complete the work in a single trip, you will save' money and time, but you have not had the opportunity to enjoy travel.

- (1) do not have
- (2) would not. be having
- (3) will not have
- (4) may not have had
- (5) No correction required

, Q.36-40. In each sentence below one word has been printed in bold, Below the sentence, five words and suggested, one of which can replace the bold word, without changing the meaning of the sentence. Find out the appropriate word in each case. '

Q.36. Their heroic act of containing terrorists was lauded by the Government. .

- (1) rewarded (2) nullified
- (3) criticized (4) admonished
- (5) admired

Q.37. His nasty statement had a very undesirable repercussion.

- (1) repentance (2) reaction
- (3) exchange (4) confrontation
- (5) reputation

Q.38. Obscene pictures cast a pernicious effect on young and susceptible minds.

- (1) abominable (2) , malicious
- (3) destructive (4) lusting,
- (5) indelible.

**Increase your score by 20 marks with CETking - Workshops | Mocks**

SNAPking - First coaching institute dedicated for SNAP by SIBM, JBIMS alumni and students

Try our free workshop with JBIMS topper to feel the difference Call now 9820500380

SNAPking Workshops • SNAPking Mocks • CETking Workshops • CETking Mocks • GDPI Clinic

For details log on to [www.cetking.com](http://www.cetking.com) or Call 9820500380

Andheri • Vashi • Thane • Pune

- Q.39. The obsolete weapons of the policemen will soon be replaced. -  
(1) defective (2) big-sized  
(3) Outdated (4) harmful  
(5) heavy
- Q.40. What he loved best about his job was the camaraderie among the staff members. .  
(1) warmth (2) competition  
(3) divinity (4) animosity  
(5) belongingness

**. SECTION II****QUANTITATIVE SKILLS, DATA ANALYSIS & SUFFICIENCY**

Q.41-55. What should come in place of question mark' (?) in the following questions ?

- Q.41.  $215 \times ? \times 12 = 136585 + 7895$   
(1) 56 (2) 54  
(3) 52 (4) 58  
(5) None of these,
- Q.42.  $(203-152) + (0.75 \times 4) = ?$   
(1) 12 (2) 14  
(3) 21 (4) 17  
(5) None of these
- Q.43.  $16.513 - 4.328 - 2.014 - 0.577 = ?$   
(1) 8.6 (2) 10.595  
(3) 11.6 (4) 9.594  
(5) None of these
- Q.44.  $? + 48 \times 15 = 405$   
(1) 1224 (2) 1-248  
(3) 1296 (4) 1272  
(5) None of these
- Q.45.  $33.3 + 3.03' + 0.03 + 30.03 + 0.003 + 303 = ?$   
(1) 366.399 (2) 369.393  
(3) 336.933 (4) 339.639  
(5) None of these ••
- Q.46 ..  $(7.3\% \text{ of } 436) - (4.8\% \text{ of } 356) = ?$   
(1) 24.348 (2) 10.543  
(3) 17.088 (4) 31.828  
(5) None of these
- Q.47.  $1534 + 26 \times 8 \text{ ., } 12 = (?)^2$   
(1) 24 (2)' 18  
(3) 22 (4) 16  
(5) None of these

**Increase your score by 20 marks with CETking - Workshops | Mocks**

SNAPking - First coaching institute dedicated for SNAP by SIBM, JBIMS alumni and students  
Try our free workshop with JBIMS topper to feel the difference Call now 9820500380  
SNAPking Workshops • SNAPking Mocks • CETking Workshops • CETking Mocks • GDPI Clinic  
For details log on to [www.cetking.com](http://www.cetking.com) or Call 9820500380 Andheri • Vashi • Thane • Pune



- Q.48.  $(9.75\% \text{ of } 3^6) - (3.82\% \text{ of } 120) = ?$   
 (1) 26.266 (2) 26.226  
 (3) 26.262 (4) 26.622  
 (5) None of these
- Q.49.  $65\% \text{ of } 284 + ? = 300$   
 (1) 115.4 (2) 123.6  
 (3) 146.8 (4) 155.2  
 (5) None of these
- Q.50.  $5339 + ? = 562$   
 (1) 9.5 (2) U.s  
 (3) 13.5 (4) 15.5  
 (5) None of these
- Q.51.  $(32)^2 \sqrt{?} \sim (23)^2 = 536$  .....  
 (1) 1764 (2) 1849  
 (3) 1521 (4) 1681  
 (5) None-of these
- Q.52.  $(56.23 + 93.96 + 17.81) + 6 = ?$   
 (1) 24 (2) 24.5  
 (3) 26 (4) 32.5  
 (5) None 'of these
- Q.53.  $(34)^{48} \times (34)^{-44} = ?$   
 (1)  $(34)^4$  (2)  $(34)^4$   
 (3)  $(34)^{12}$  (4)  $(34)^{12/11}$   
 (5) None of these
- Q.54.  $6132 + 5619 - 4725 - ? = 3134 + 1710$   
 (1) 2086 (2) 2234  
 (3) 2182 (4) 2342  
 (5) None of these
- Q.55.  $(61)^{10} \times (61)^4 = ?$   
 (1)  $(61)^6$  (2)  $(61)^{14}$   
 (3)  $(61)^{25}$  (4)  $(61)^{40}$   
 (5) None of these
- Q.56. The ages of Shauna and Imam are in the ratio of 7 : 3 respectively. After 9 years the ratio of their ages will be 4 : 3: What is age of Imam?  
 (1) 7 years (2) 5 years  
 (3) 3 years (4) 12 years  
 (5) None of these
- Q.57. By how much is  $\frac{3}{7}$ th of 266 lesser than  $\frac{4}{9}$ th of 504 ?  
 (1) 114 (2) 120  
 (3) 104 (4) 111

**Increase your score by 20 marks with CETking - Workshops | Mocks**

SNAPking - First coaching institute dedicated for SNAP by SIBM, JBIMS alumni and students  
 Try our free workshop with JBIMS topper to feel the difference Call now 9820500380  
 SNAPking Workshops • SNAPking Mocks • CETking Workshops • CETking Mocks • GDPI Clinic  
 For details log on to [www.cetking.com](http://www.cetking.com) or Call 9820500380 Andheri • Vashi • Thane • Pune

(5) None of these

Q.58. If the numerator of a fraction is increased by 200% and the denominator is 'increased by 300%, the resultant fraction is  $\frac{5}{12}$ . What was the original fraction?

- (1)  $\frac{12}{9}$             (2)  $\frac{5}{9}$   
 (3)  $\frac{11}{5}$             (4)  $\frac{9}{5}$   
 (5) None of these

Q.59. Sumant started a business investing Rs. 48,000/-. After 6 months Maurya joined him with a capital of Rs.56,000/-. At the end of the year the total profit was Rs.24,529/-. What is the difference between the share of profits of Sumant and Maurya ?

- (1) Rs.6,455/-    (2). Rs'.7,775/-  
 (3) Rs.5,545/-    (4) Rs.4,875/-  
 (5) None of these

Q.60. In a class of 75 students, each students got sweets that are 20% of the total number of students. How many sweets were there?

- (1) 1100            (2) 1275  
 (3) 1125            (4) Cannot be determined  
 (5) None of these

Q.61. The compound interest accrued on an amount of Rs. 18,000/- at the end of three years is Rs.5,958/-. What would be the simple interest accrued on the same amount at the same rate in the same period?

- (1) Rs.5,100/-    (2) Rs.5,400/-  
 (3) Rs.5,700/-    (4) Rs.4,800/-  
 (5) None of these

Q.62. Which number should replace both the question marks in the following equation?  
 $\frac{?}{492} = \frac{123}{?}$

- (1) 252            (2) 248  
 (3) 244            (4) 242  
 (5) None of these

Q.63. What is 25% of 45% of  $\frac{4}{9}$ th of 4540?

- (1) 217            (2) 207  
 (3) 237            (4) 227            (5) None of these

Q.64. A sum of money is divided among A, B, C D in the ratio of 3 : 7 : 9 : 13 respectively the share of B is Rs. 9,180/- more than share of A, then what is the total amount money of A & C together?

- (1) Rs.27,540/-    (2) Rs.27,560 -  
 (3) Rs.26,680/-    (4) Rs.24,740-  
 (5) None of these

Q.65. One-seventh of a number is 48. What will  $\frac{1}{7}$  of that number be ?

- (1) 228.46    (2) 237.36  
 (3) 213.72    (4) 241.92  
 (5) None of these

Q.66-70. In the following number series only one num is wrong. Find out the wrong number.

**Increase your score by 20 marks with CETking - Workshops | Mocks**

SNAPking - First coaching institute dedicated for SNAP by SIBM, JBIMS alumni and students  
 Try our free workshop with JBIMS topper to feel the difference Call now 9820500380  
 SNAPking Workshops • SNAPking Mocks • CETking Workshops • CETking Mocks • GDPI Clinic  
 For details log on to [www.cetking.com](http://www.cetking.com) or Call 9820500380            Andheri • Vashi • Thane • Pune

Q.66. 21 27 48 75 123 198 323  
(1) 198 (2) 323  
(3) 75 (4) 27  
(5) None of these

Q.67. 32 52 87 146.5 245.75 403.125 653.6875  
(1) 52 (2) 87  
(3) 245.75 (4) 403.125  
(5) None of these

Q.68. 16 17 32 99 392 1960 11784  
(1) 17 (2) 99  
(3) 11784 (4) 1960  
(5) None of these

Q.69. 5 9 18 34 60 95 144  
(1) 144 (2) 95  
(3) 18 (4) 9  
(5) None of these

Q.70. 36 54 81 120.5 182.25 273.375 410.0625  
(1) 54 (2) 81  
(3) 120.5 (4) 273.375  
(5) None of these

Q. 71-75. What approximate value should come in place of question mark (?) in the following questions? (You are not expected to calculate the exact value.)

Q.71.  $(7159 + 6382 + 1156) \div (543 + 499 + 615) =$   
(1) 11 (2) 15  
(3) 7 (4) 17  
(5) 9

Q.72.  $544.134 + 8.886 - 5.435 \times 31.002 = ?$   
(1) 212 (2) 438  
(3) 196 (4) 552  
(5) 9

Q.73.  $(619\% \text{ of } 845) + 723 = ?$   
(1) 12 (2) 7  
(3) 19 (4) 23  
(5) 29

Q.74.  $\sqrt{1562000} = ?$   
(1) 1175 (2) 1200  
(3) 1250 (4) 1325  
(5) 1485

**Increase your score by 20 marks with CETking - Workshops | Mocks**

SNAPking - First coaching institute dedicated for SNAP by SIBM, JBIMS alumni and students  
Try our free workshop with JBIMS topper to feel the difference Call now 9820500380  
SNAPking Workshops • SNAPking Mocks • CETking Workshops • CETking Mocks • GDPI Clinic  
For details log on to [www.cetking.com](http://www.cetking.com) or Call 9820500380 Andheri • Vashi • Thane • Pune

- Q.75.  $753362 \times 61 = ? \times 88888$   
 (1) 517 (2) 527  
 (3) 537 (4) 547  
 (5) 557

Q76-80 Study the table carefully to answer the questions that follow:-

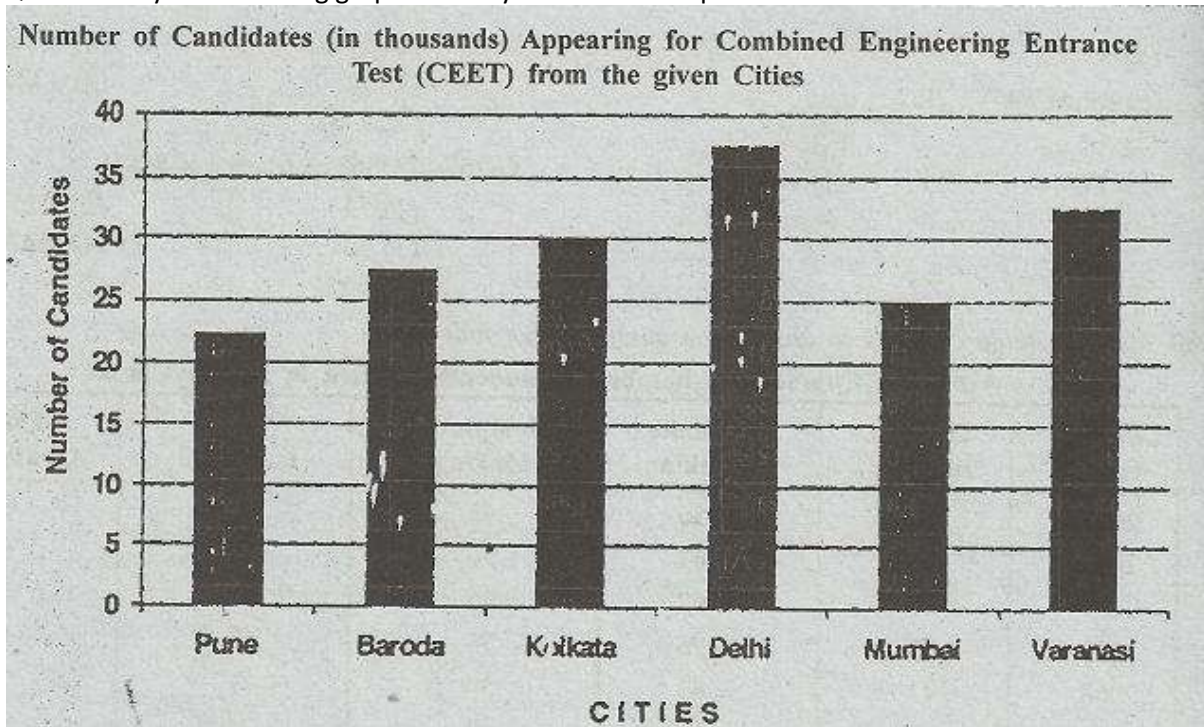
Courses Years	Book Binding	Candle Making	Sculpture Making	Wall Hanging	Flower Arrangement
2002	55	56	45	41	61
2003	76	67	56	54	62
2004	88	62	86	58	48
2005	45	75	75	67	46
2006	43	63	59	77	75
2007	67	56	67	74	84
2008	39	48	58	85	79

- Q.76. What is the respective ratio of number of Students enrolled in Sculpture Making to the number of Students enrolled in Book Binding in the year 2005 ?  
 (1) 12:11 (2) 15:13  
 (3) 5:3 (4) 3: 1  
 (5) None of these
- Q. 77. What is the average number of Students enrolled . in the Candle Making over the given years ?  
 (1) 94 (2) 88  
 (3) 73 . (4) 61  
 (5) None of these.
- Q.78. In 2008, the number of Students. enrolled in Flower Arrangement is approximately what percent of the number of Students enrolled in Wall Hanging?  
 (1)76 (2) 89  
 (3) 45 (4) 51  
 (5) 93
- Q: 79. What is the difference between the total number of Students enrolled in Candle Making over the given years and the total number of Students are rolled in Wall Hanging over the given years?  
 (1) 39 (2) 27  
 (3) 32 (4) 26  
 (5) None of these
- Q.80. What is the difference between the average number of Students enrolled in Book Binding over the given years and the average number of Students enrolled in Flower Arrangement over the given years ?  
 (1) 6 (2) 7  
 (3) 8 (4) 9  
 (5) None of these

**Increase your score by 20 marks with CETking - Workshops | Mocks**

SNAPking - First coaching institute dedicated for SNAP by SIBM, JBIMS alumni and students  
 Try our free workshop with JBIMS topper to feel the difference Call now 9820500380  
 SNAPking Workshops • SNAPking Mocks • CETking Workshops • CETking Mocks • GDPI Clinic  
 For details log on to [www.cetking.com](http://www.cetking.com) or Call 9820500380 Andheri • Vashi • Thane • Pune

Q81-85. Study the following graph carefully to answer the questions :-



Q.81. The number of candidates appearing for CEET from Baroda is what percent of the number of candidates appearing for CEET from Mumbai?

- (1) 110 (2) 90
- (3) 85 (4) 103
- (5) 117

Q.82. The number of candidates appearing for CEET from Delhi is what percent of the total number of candidates appearing for CEET from all the Cities together (rounded off to two digits after decimal) ?

- (1) 23.87 (2) 21.43
- (3) 19.54 (4) 25.92
- (5) None of these

Q.83. What is the respective ratio of the number of students appearing for the CEET from Pune, Kolkata & Mumbai together to the number of students appearing for the CEET from Baroda, Delhi & Varanasi together?

- (1) 10: 13 (2) 3 : 4
- (3) 5 : 6 (4) 16: 19

**Increase your score by 20 marks with CETking - Workshops | Mocks**

SNAPking - First coaching institute dedicated for SNAP by SIBM, JBIMS alumni and students  
 Try our free workshop with JBIMS topper to feel the difference Call now 9820500380  
 SNAPking Workshops • SNAPking Mocks • CETking Workshops • CETking Mocks • GDPI Clinic  
 For details log on to [www.cetking.com](http://www.cetking.com) or Call 9820500380 Andheri • Vashi • Thane • Pune

(5) None of these

Q.84. What is the respective ratio of the number of candidates appearing for the CEET from Pune to Kolkata ?

- (1) 3: 4      (2) 4: 5  
(3) 11 : 13    (4) 9: 11  
(5) None of these

Q.85. What is the approximate average number of candidates appearing for CEET from all the Cities together?

- (1) 31265      (2) 33456  
(3) 29167      (4) 0128754  
(5) 32442

Q.86-90 Study the information carefully to answer the following questions :-

There are 22560 employees in an organization. The ratio of males to females is 7 : 5 respectively. All the employees are in six -different departments viz. Administration, Receiving & Dispatch. Personnel Department, Accounts, Vigilance and IT. 20 percent of the females are in Receiving & Dispatch. 15 percent of the males are. in Personnel Department. 15 percent of the total numbers of employees are in Vigilance. Females in IT are 30 percent of the females in: Receiving & Dispatch. 40 percent of the males are in Administration. Males in Receiving & Dispatch-are 50 percent of the females in the same 30 percent of the females are in Accounts. The ratio of males to females in the IT is 3:1 respectively 30 percent of the total number of employees are in Administration. The ratio of males to females in the Accounts is 23 : 47 respectively.

Q.86. What is the total number of employees in Personnel Department?

- (1) 3384    (2) 3132  
(3) 2256    (4) 2820  
(5) None of these.

Q.87. What, is the total number of males in IT? (1) 940(2) 1974

- (1)940    (2) 1974  
(3) 1380    (4) 1692  
(5) None of these

Q.88. What is the total number of females in Vigilance?

- (1) 1474    (2) 1910  
(3) 1158 .    (4) 1880  
(5) None of these

Q.89. Number of males in Accounts forms what percent of the number of females in Receiving & Dispatch? (rounded off to two digits after decimal)

- (1) 45.98      (2) 66.64  
(3) 73.40      (4) 53.32  
(5) None of these

Q.90. Number of males in Administration forms approximately what percent of total number of the Employees in the organization?

- (1) 45    (b) 77

**Increase your score by 20 marks with CETking - Workshops | Mocks**

SNAPking - First coaching institute dedicated for SNAP by SIBM, JBIMS alumni and students

Try our free workshop with JBIMS topper to feel the difference Call now 9820500380

SNAPking Workshops • SNAPking Mocks • CETking Workshops • CETking Mocks • GDPI Clinic

For details log on to [www.cetking.com](http://www.cetking.com) or Call 9820500380      Andheri • Vashi • Thane • Pune

- (3) 82 (4) 51  
(5) 23

Q.91-95 Study the table carefully to answer the questions that follow:-

Years	CLASSES									
	VI		VII		VIII		IX		X	
	Pass	Fail	Pass	Fail	Pass	Fail	Pass	Fail	Pass	Fail
2003	56	08	95	10	53	04	84	03	68	11
2004	78	09	82	11	49	06	87	06	62	08
2005	96	13	63	09	68	08	82	08	54	05
2006	56	11	67	06	73	10	95	10	58	09
2007	49	12	85	07	81	11	68	13	82	13
2008	77	07	76	12	90	05	64	15	71	14

Q.91. Which Class has maximum number of Pass Students from all the years together?

- (1) X (2) VI  
(3) IX (4) VII  
(5) VIII

Q.92. What is the average number of Pass students of all the classes together in the year 2007?

- (1) 67 (2) 73  
(3) 79 (4) 61  
(5) None of these

Q.93. What is the respective ratio of the total number of Pass Students of Class VII to that of Class VIII over the years?

- (1) 26 : 23 (2) 12 : 13  
(3) 3 : 4 (4) 4 : 7  
(5) None of these

Q.94. What is the respective ratio of the total number of Fail students of Class IX to the total number of Fail students of Class VI over the years?

- (1) 5 : 6 (2) 3 : 4  
(3) 4 : 9 (4) 7 : 11  
(5) None of these

Q.95. What is the average number of Fail students from Class X over the years?

- (1) 11 (2) 12  
(3) 14 (4) 10  
(5) None of these

**Increase your score by 20 marks with CETking - Workshops | Mocks**

SNAPking - First coaching institute dedicated for SNAP by SIBM, JBIMS alumni and students  
Try our free workshop with JBIMS topper to feel the difference Call now 9820500380  
SNAPking Workshops • SNAPking Mocks • CETking Workshops • CETking Mocks • GDPI Clinic  
For details log on to [www.cetking.com](http://www.cetking.com) or Call 9820500380 Andheri • Vashi • Thane • Pune

Q. 96-100. Directions: Each question below is followed by two statements A and B, You are to determine whether the data given in the statements is sufficient for answering the question You should use the data and your knowledge of Mathematics to choose between the possible answers .. Give answer (1) if the statement A alone is sufficient to answer the question, but the statement B alone is not sufficient.

. Give answer (2) if the statement B alone is sufficient to answer the question, but the statement A alone is not sufficient.

Give answer (3) if both statements A and B together are needed to answer the question.

Give answer (4) if either the statement A alone or statement B alone is sufficient to answer the question.

Give answer (5) - if you - cannot get the answer from the statement A and B together. But need \_ even more data

Q.96. The ages of Shruti and Aditi are in the ratio of 14 : 11. What is the age of Shruti ?

- A. After 6 years the ratio of Shruti's and Aditi's ages will be 17 : 14.
- B. The ages of Aditi and Tulika are in the ratio of 11 : 6.

Q.97. What is the three digit number ?

- A. The three digit number is exact multiple of 9.
- B. The first and the third digit is 8.

Q.98. What is the rate of interest p.c.p.a. on an amount of Rs. 15.000/- deposited in a Bank ?

- A. The simple interest for three years is Rs. 2,700/-.
- B. The difference between the simple interest and compound interest is Rs. 165.24.

Q.99. What is the age of C, in a group of A, B, C, D, E and F whose average age is 26 years?

- A. Total of the ages of A and F is 48 years.
- B. Total of the ages of B and D is 62 years.

Q.100. How many women can Complete a piece of work in 10 days ?

- A. If the same piece of work is completed by 4 men in 6 days.
- B. If the same piece of work is completed by 7 women in 14 days.

## INTELLIGENCE & LOGICAL REASONING

101-105. These questions are based on the following arrangement of letters, numbers and symbols. Study it carefully and answer the questions that follow:

H 6 7 I L \$ 3 % 1 F M @ 5 R E # Q A 2 B B © J U 4 1 8 D N 9

Q101. How many such letters are there in the above arrangement, each of which is immediately followed by a symbol - and also immediately preceded by a vowel?

- (1) None
- (2) One
- (3) Two
- (4) Three
- (5) Four

Q102. What will come in place of the question-mark (?) in the following series based on the above arrangement ?

HI7 \$1%-MR5 ?

- (1) #2A
- (2) EA#

### Increase your score by 20 marks with CETking - Workshops | Mocks

SNAPking - First coaching institute dedicated for SNAP by SIBM, JBIMS alumni and students

Try our free workshop with JBIMS topper to feel the difference Call now 9820500380

SNAPking Workshops • SNAPking Mocks • CETking Workshops • CETking Mocks • GDPI Clinic

For details log on to [www.cetking.com](http://www.cetking.com) or Call 9820500380

Andheri • Vashi • Thane • Pune



- (3) #2Q      (4) EAQ  
(5) None of these

Q103. If all the elements in the ' above arrangement are placed in reverse order which element will be sixth to the right of eleventh element from the right?

- (1) I      (2) 4  
(3) L      (4) \$  
(5) None of these

Q104. Four of the following five are alike in a certain 'way based on their positions in the above arrangement and so form a group. Which - is the one that does not belong to the group?

- (1) 31\$ (2) EQR  
(3) 48U (4) 2©A  
(5) F%M

Q.105. How many such numbers are there in the above arrangement, each of which is either immediately preceded or immediately followed by a symbol but not both ?

- (1) None .      (2) One  
(3) Two      (4) Three  
(5) More than three

Q.106. How many such pairs of letters are there in the word DISPLAYED, each of which has as many letters between them in the word, as they have between them in the English alphabet?

- (1) None      (2) One  
(3) Two      (4) Three  
(5) More than three

Q.107. In a certain code CONFIGURE is written as GUREIFNOC, how is ADVERTISE written in that code v

- (1) TISERADVE      (2) TISEREVDA  
(3) ESITRADVE      (4) ESITREVDA  
(5) None of these

Q.108. Four of the following five are alike in a certain way and so form a group. Which is the one that does not belong to the group?

- (1) 37      (2) 47  
(3) 67      (4) 97  
(5) 87

Q.109. 'A' is mother of 'B'. 'C is wife of 'D' who is son of 'H', the father of 'B'. How is 'A' related to 'C'?

- (1) Mother.-in-law      (2) Sister-in-law  
(3) Mother      (4) Cannot be determined  
(5) None of these

Q.110.if '+' means '7' '-' means '~', 'x' means '+' and '7' means '-' then what is the value of  $450 \ 7319 + 11 \times 17 \sim 6$  ?

- (1) 581      (2) 523  
(3) 174      (4) 319  
(5) None of these

**Increase your score by 20 marks with CETking - Workshops | Mocks**

SNAPking - First coaching institute dedicated for SNAP by SIBM, JBIMS alumni and students

Try our free workshop with JBIMS topper to feel the difference Call now 9820500380

SNAPking Workshops • SNAPking Mocks • CETking Workshops • CETking Mocks • GDPI Clinic

For details log on to [www.cetking.com](http://www.cetking.com) or Call 9820500380

Andheri • Vashi • Thane • Pune

Q.111-115. In each of the questions below are given four statements followed by three conclusions numbered 1, II and III You have to 'take the given statements to be true even if they seem to be at variance from commonly known facts. Read all the conclusions and then decide which of the given conclusions logically follows from the given statements disregarding commonly known facts.

Q.111. Statements : All petals are flowers. Some flowers are buds.

Some buds are leaves. All leaves are plants.

Conclusions: I. Some petals are buds.

II. Some flowers are plants.

III. No flower is plant.'

(1) Only I follows

(2) Only either II or III follows

(4) Only III follows

(5) None of these .

Q. 112. Statements: Some pens are keys. Some keys are locks.

All locks' are cards. No card is paper.

Conclusions: I. No lock is paper.

II. Some cards are keys.

III. Some keys are not paper.

(1) Only I & II follow (2) Only I follows

(3) Only II follows (4) None follows

(5) All follow

Q113. Statements: Some pearls are gems. All gems are diamonds.

No diamond is stone. Some stones are corals.

Conclusions: I. Some stones are pearls.

II. Some corals are diamonds.

III. No stone is pearl.

(1) Only I follows (2) Only II follows

(3) Only either I or III follows

(4) Only I & II follow (5) None of these

Q.114. Statements: Some apartments are flats. Some flats are buildings.

All buildings are bungalows. All bungalows are gardens.

.Conclusions: 1. Some apartments are buildings.

II. All bungalows are buildings.

III. No flat is, garden.

(1) None follows

(2) Only I follows

(3) Only either I or III follows

(4) Only II & III follow

(5) None of these

Q.115. Statements: All chairs are tables. All tables are bottles.

Some bottles are jars. No jar is bucket.

Conclusions: I. Some tables are jars.

II. Some bottles are chairs.

III. No bottle is bucket.

**Increase your score by 20 marks with CETking - Workshops | Mocks**

SNAPking - First coaching institute dedicated for SNAP by SIBM, JBIMS alumni and students

Try our free workshop with JBIMS topper to feel the difference Call now 9820500380

SNAPking Workshops • SNAPking Mocks • CETking Workshops • CETking Mocks • GDPI Clinic

For details log on to [www.cetking.com](http://www.cetking.com) or Call 9820500380

Andheri • Vashi • Thane • Pune

- (1) Only I follows
- (2) Only I & II follow
- (3) All I, II & III follow
- (4) Only II follows
- (5) None of these

Q.116-120. In these questions the symbols @\*, %, # and \$ are used with different meanings as follows:

- 'A @ B' means 'A is neither smaller than nor equal to B'.
- 'A \* B' means 'A is not smaller than B' .
- 'A % B' means 'A is neither smaller than nor greater than. B'.
- 'A # B' means 'A is neither greater than nor equal to B' .
- 'A \$ B.' means 'A is not greater than B'.

In each question, four statements showing relationships have been given, which are followed by three conclusions I, II & III. Assuming that the given statements are true, find out which conclusion(s) is/are definitely true.'

Q116. Statements: F # L, L \* D, D @ E, E \$ H

Conclusions: I. H \$ D

II. F@H

III. E # L

- (1) Only I is true
- (2) Only II is true
- (3) Only III is true
- (4) All I, II & III are true
- (5) None of these

Q.117. Statements: H \* G, G @ K, I # K, I % E

Conclusions: I. H@ I

II. E# G

III. H \* E

- (1) Only I & II are true -
- (2) Only I is true
- (3) Only II & III are true
- (4) All I, II & ,II are true
- (5) None of these

Q.118. Statements: M @ J, J \$ F, F % E, E # L

Conclusions: I. L @ J

II. J \$ L .

III. E \* J

- (1) Only I & II are true
- (2) Only I, & III are true
- (3) Only II & III are true
- (4) All are true .
- (5) None of these

**Increase your score by 20 marks with CETking - Workshops | Mocks**

SNAPking - First coaching institute dedicated for SNAP by SIBM, JBIMS alumni and students  
 Try our free workshop with JBIMS topper to feel the difference Call now 9820500380  
 SNAPking Workshops • SNAPking Mocks • CETking Workshops • CETking Mocks • GDPI Clinic  
 For details log on to [www.cetking.com](http://www.cetking.com) or Call 9820500380 Andheri • Vashi • Thane • Pune

Q.119. Statements:  $R \text{ \$ } T, T \text{ @ } V, V \text{ \% } W, W \text{ * } Q$

Conclusions: I.  $Q \text{ \# } T$

II.  $R \text{ \# } Q$

III.  $R \text{ * } Q$

- (1) None is true
- (2) Only I is true
- (3) Only either II or III is true
- (4) Only I and either II or III are true
- (5) None of these

Q.120. Statements:  $L \text{ \# } J, J \text{ @ } Q, Q \text{ * } R, R \text{ s } V$

Conclusions: I.  $L \text{ \# } Q$

II.  $Q \text{ * } V$

III.  $J \text{ \% } V$

- (1) Only I is true
- (2) Only II is true
- (3) Only III is true
- (4) Both I & II are true
- (5) None is true

121-125. Each of the questions below consists ~ question and two statements numbered I and given below it. You have to decide whether data provided in the statements are sufficient to answer the question: Read both the statement and-

Give answer (1) if the data in Statement alone are sufficient to answer the question, while the in Statement II alone are sufficient to answer the question.

Give answer (2) if the data in Statement alone are sufficient to answer the question, while the data in .Statement I alone are sufficient to answer t question.

Give answer (3) if the data in Statement alone or in Statement II alone are sufficient to answer question.

Give answer (4) if the data in both the Statements I and II are not sufficient to 'answer the question,

Give answer (5) if the data in both the Statements I and II together are necessary to answer 'the question.

Q.121. How many children are there in the row?

Statements: I. Nikhil is 23rd from the left end of the row.

II. Nikhil is fifth to the left of Sudhanshu who is 15th from the right end of the row.

Q.122. What is the code for 'she' in the code language?

Statements: I. In the code language 'she walks fast' is written as 'ka re pa'.

II. In the code language 'do it fast' is written as 'jo ta re'.

Q.123. What is Sudhir's rank from top in the class of 48 students ?

Statements: I. Sudhir's rank is 10 ranks below Nandini who is 35th from the bottom ..

II. Sudhir's rank is 10 ranks above Samir who is 24th from the top.

Q.124. How is Radhika related to Shamika ?

Statements: I. Sushama is wife of Naresh who is father of Shamika.

II. Naresh is son of Manisha the .. sister of Radhika.

**Increase your score by 20 marks with CETking - Workshops | Mocks**

SNAPking - First coaching institute dedicated for SNAP by SIBM, JBIMS alumni and students

Try our free workshop with JBIMS topper to feel the difference Call now 9820500380

SNAPking Workshops • SNAPking Mocks • CETking Workshops • CETking Mocks • GDPI Clinic

For details log on to [www.cetking.com](http://www.cetking.com) or Call 9820500380

Andheri • Vashi • Thane • Pune

Q.125. Pole 'X' is in which direction with respect to Pole 'y' ?

Statements: 1. Pole 'X' is to the West of pole 'D' which is to the South of pole 'Y'.

II. Pole 'F' is to the West of pole 'Y' and to the North of pole 'X',

126-130. Read the following information carefully and answer the following questions.

Eight executives A, B, C, D, E, F, G & H are sitting for a meeting around a circular table. F is third to the right of C who is third to the right of G. A is second to the left of B and neither A nor B is an immediate neighbour of G. D is not an immediate neighbour of F. H is third to the right of B.

Q.126. Which of the following is the correct position of E with respect to D ?

- (1) Third to the right
- (2) Fourth to the right
- (3) Fourth to the left
- (4) Third to the left
- (5) Both (2) & (3)

Q.127. Who sits between A & B ?

- (1) E    (2) C
- (3) D    (4) H
- (5) None of these

Q.128. Who sits between G & F ?

- (1) H    (2) E
- (3) D    (4) C
- (5) None of these

Q.129. Who is second to the left of D?

- (1) B    (2) C
- (3) A    (4) H
- (5) None of these

Q.130. Four of the following five are alike in a certain way on the basis of their positions and so form a group; which is the one that does not belong to the group?

- (1) AB    (2) DC
- (3) GF    (4) PH
- (5) BF

131-133. These questions are based on the following set of numbers;

569 834 639 358 495

Q.131. If in each number the first and the third digits are interchanged, which number will be the largest?

- (1) 569    (2) 834
- (3) 639    (4) 358
- (5) 495

Q.132. If in each number the first and the second digits are interchanged which number will, be second in descending order?

- (1) 569    (2) 834

**Increase your score by 20 marks with CETking - Workshops | Mocks**

SNAPking - First coaching institute dedicated for SNAP by SIBM, JBIMS alumni and students

Try our free workshop with JBIMS topper to feel the difference Call now 9820500380

SNAPking Workshops • SNAPking Mocks • CETking Workshops • CETking Mocks • GDPI Clinic

For details log on to [www.cetking.com](http://www.cetking.com) or Call 9820500380

Andheri • Vashi • Thane • Pune

- (3) 639 (4) 358  
(5) 495

Q.133. If in each number '1' is added to the first digit and '1' is subtracted from the second digit, and then the numbers are arranged in ascending order, which number will be the fourth ?

- (1) 569 (2) 834  
(3) 639 (4) 358  
(5) 495

134-135. These questions are based on the following information;

'A \* B' means 'A is wife of B',

'AS B' means 'A is father of B'.

'A # B' means 'A is daughter of B'.

'A + B' means 'A is brother of B',

Q.134. Which of the following expressions indicate 'R is maternal uncle of J' ?

- (1) R+T \*W#J (2) R+T\*W\$J  
(3) k\*T+WSJ (4) T+R\*WSJ  
(5) None of these

Q.135. In the expression L+H\$F#M, how is F related to L ?

- (1) Uncle (2) Aunt  
(3) Nephew or Niece (4) Niece  
(5) Nephew

Q.136-140. Read the following information carefully and answer the following questions.

Seven members of a family V, W, X, Y, T, R & Z are travelling to seven destinations Chennai, Delhi, Hyderabad, Bangalore, Jaipur, Pune and Bhopal not necessarily in the same order. Each one of them has a different profession "Doctor, Engineer, Consultant, Banker, Professor, Businessman and Sportsman not necessarily in the same order.

W is a Banker and he travels to Delhi. Z is a 'sportsman and he does not travel to Jaipur or Chennai. T is not a Doctor or Professor and travels to Hyderabad. Consultant does not travel to Hyderabad or Bangalore. Businessman travels to Pune. R travels to Bangalore. X, the Doctor travels to Chennai. Y is not a businessman.

Q.136. Who travels to Pune?

- (1) V (2) Y  
(3) R (4) Z  
(5) None of these

Q.137. Who is the Professor?

- (1) V (2) R  
(3) X (4) Y  
(5) None of these

Q.138. Which of the following combinations of profession-person-place is correct ?

- (1) Consultant- Y-Jaipur  
(2) Consultant-X-Jaipur  
(3) Businessman-W-Pune  
(4) Businessman- Y-Pune

**Increase your score by 20 marks with CETking - Workshops | Mocks**

SNAPking - First coaching institute dedicated for SNAP by SIBM, JBIMS alumni and students

Try our free workshop with JBIMS topper to feel the difference Call now 9820500380

SNAPking Workshops • SNAPking Mocks • CETking Workshops • CETking Mocks • GDPI Clinic

For details log on to [www.cetking.com](http://www.cetking.com) or Call 9820500380

Andheri • Vashi • Thane • Pune

(5) None of these

Q.139. Who travels to Bhopal?

- (1) X (2) Y  
(3) V (4) Z  
(5) None, of these

Q.140. What is T's profession ?

- (1) Businessman  
(2) Engineer  
(3) Consultant  
(4) 'Cannot be determined'  
(5) None of these'

141-145. In each of these questions a group of digits is given followed by four combinations of letters and symbols numbered (1), (2), (3) & (4). Group of digits is to be coded as per the scheme and conditions given below. You have to find out which of combinations (1), (2), (3) & (4) correctly represents the group, of digits and indicate your answer accordingly. If none of the combinations is correct your answer is (5 i.e. 'None of these').

Digits : 5 3 8 1 7 9 '6 4 0 2

Letter/Symbol code : C H I D @ F % L M ©

Conditions: I. If the first digit is odd and the last is even their codes are to be interchanged.

II. If the first as well as the last digit is even they both are to be coded as \$.

III. If the first digit is even and the last digit is 0 both are to be coded as code for even digit.

iv. If the first digit as well as the last digit is odd both are to be coded as # .

Q.141. 504693

- (1) CML%FH (2) HML%FC  
(3) #ML%FH (4) HML%F#  
(5) None of these

Q.142. 235790

- (1) MHC@FC (2) MHC@FM  
(3) ©HC@F© (4) ©HC@FM  
(5) None of these

Q.143. 278951

- (1) ©@IFC© (2) D@IFCD  
(3) D@IFO© (4) ©@IFCD  
(5) None of these

Q.144. 459716

- (1) SCF@D\$ (2) %CF@DL .  
(3) LCF@D% (4) %CF@D%  
(5) None of these

Q.145. 365048

- (1) H%CMLI (2) I%CMLH

**Increase your score by 20 marks with CETking - Workshops | Mocks**

SNAPking - First coaching institute dedicated for SNAP by SIBM, JBIMS alumni and students

Try our free workshop with JBIMS topper to feel the difference Call now 9820500380

SNAPking Workshops • SNAPking Mocks • CETking Workshops • CETking Mocks • GDPI Clinic

For details log on to [www.cetking.com](http://www.cetking.com) or Call 9820500380 Andheri • Vashi • Thane • Pune

(3) H% CMLH (4) I% CMLI

(5) None of these

146-150. XYZ Ltd. Company wants to recruit Jr. Executives in its Marketing department. Following criteria are laid down by the company.

The candidate must -

(i) be a graduate in any discipline with at least 65% marks.

(ii) have passed post-graduate degree/diploma in Marketing Management or Public Relations with at least 60% marks.

(iii) have cleared the selection test with at least 55% marks.

(iv) be not less than 21 years and not more than 26 years of age as on 1.12.2008

(v) have cleared the interview with at least 50% marks.

However, if a candidate satisfies all the above mentioned criteria except -

(a) at (i) above but has secured at least 70% marks in Post-graduate degree/diploma in Marketing, Management, the case is to be referred to the Vice President of the company.

(b) at (iii) above but has secured at least 50% marks in selection test and at least 55% marks in interview the case may be referred to the Managing Director.

Mark answer (1) if candidate is to be selected:

Mark answer (2) if candidate is not to be selected.

Mark answer (3) if the data is inadequate to take a decision.

Mark answer (4) if the case is to be referred to the Vice President.

Mark answer (5) if the case is to be referred

Q.146. Abhishek Neve is a B.Corp. passed in first class with 63% marks and has a post-graduate degree in Marketing Management with 72% marks. His date of birth is 1.7.1985: He has cleared the selection test and interview with 56% and 58% marks respectively.

Q.147. Mangesh is an Arts graduate passed with 66% marks and a post-graduate in Computer Management with 72% marks. He has cleared the selection test as well as interview with 58% marks. He has completed 24 years of age on 12th August 2008.

Q.148. Leela Mehra is a Science graduate passed with 69% marks in first class and has done postgraduate diploma in Marketing Management with 73% marks. She has cleared the selection test with 52% marks and Interview with 59% marks. Her date of birth is 23rd September 1983.

Q.149. Manjusha Save is an Engineering graduate with 77% marks and has done Post-graduation in Management with 64% marks. She has cleared the selection test with 62% marks and interview with 60% marks. Her date of birth is 25.1.1984.

Q.150. Niranjan, is a Science graduate with 68% marks and has a post-graduate diploma in Public Relations with 65% marks. He has completed 23 years of age in November 2008. He has cleared the selection test with 58% marks and interview with 53% marks.

**Increase your score by 20 marks with CETking - Workshops | Mocks**

SNAPking - First coaching institute dedicated for SNAP by SIBM, JBIMS alumni and students

Try our free workshop with JBIMS topper to feel the difference Call now 9820500380

SNAPking Workshops • SNAPking Mocks • CETking Workshops • CETking Mocks • GDPI Clinic

For details log on to [www.cetking.com](http://www.cetking.com) or Call 9820500380

Andheri • Vashi • Thane • Pune



## ANSWERS • NMAT • 2008

1. In the third para, author wants to emphasize on transparency, this was because Gandhiji's incidence was narrated. Choice (2)
2. Author wanted to bring together young minds to progress the country Choice (4)
3. Choice (4)
4. The author is optimistic, but not completely as at times he is disappointed by the progress and at times he is very much inspired. Choice (1)
5. The last sentence 'inspires the young generation and make them feel that no one can stop them, from getting developed Choice (3)
6. From the last para it is clear that nothing can stop these avenues from progressing Choice (3)
7. From the fourth para it is clear that country's competitiveness is defined as the ability of economy to achieve high rates of growth. Choice, (1)
8. Choice (3)
9. In the 4th para, the word however signifies that despite of enormous progress we are yet to be called developed. Choice (3)
10. According to the passage (in para 4) it clear that we have not yet become developed, we are on the path of progress.) Choice (5)
11. Choice (3)
12. Transparency means clear, fair, the word opposite to it is dullness. , Choice (3)
13. Choice (2)
14. From the first para, it is clear that the word 'ignite' means to make the youth 'move into the action'. Choice (4)

**Increase your score by 20 marks with CETking - Workshops | Mocks**

SNAPking - First coaching institute dedicated for SNAP by SIBM, JBIMS alumni and students  
Try our free workshop with JBIMS topper to feel the difference Call now 9820500380  
SNAPking Workshops • SNAPking Mocks • CETking Workshops • CETking Mocks • GDPI Clinic  
For details log on to [www.cetking.com](http://www.cetking.com) or Call 9820500380 Andheri • Vashi • Thane • Pune

15. Choice. (4)

16. Choice (3)

17. Choice (1)

18. Choice (3)

19. Choice (4)

20. Choice (2)

21. Choice (3)

22. Choice (1)

23. Choice (1)

24. Choice (2)

25. Choice (2)

Solution for 26 to 30

The arrangement of the sentences is as follows [0] [A] [F] [C] [E] [B]

26. Choice (1)

27. Choice (2)

28. Choice (5)

29. Choice (3)

30. Choice (4)

31.

32.

33.

34.

35. Choice(1)

36. Lauded means to praise or admire Choice (5)

37. Repercussion means indirect effect or reaction Choice (2)

38. Pernicious means harmful or destructive Choice (3)

39. Obsolete means outdated Choice (3)

40. Camaraderie means friendship, some belongingness Choice (5)

**Increase your score by 20 marks with CETking - Workshops | Mocks**

SNAPking - First coaching institute dedicated for SNAP by SIBM, JBIMS alumni and students

Try our free workshop with JBIMS topper to feel the difference Call now 9820500380

SNAPking Workshops • SNAPking Mocks • CETking Workshops • CETking Mocks • GDPI Clinic

For details log on to [www.cetking.com](http://www.cetking.com) or Call 9820500380

Andheri • Vashi • Thane • Pune

41. Choice (1)

42.  $(203 - 152) + (0.75 \times 4) = 51 + 3 = 17$  Choice (4).

43. Choice (4)

43.  $n + 48 \times 15 = 405 \Rightarrow n + 48 = 27$   
 $\Rightarrow 11 = 27 \times 48 = 1296$

45. Choice (2)

46.  $31.8 - 17.088 = 14.712$   
Hence none of the option given is right Choice (5)

47. Applying BODMAS  
 $484 = n^2$   
 $\Rightarrow n = 22$  Choice (3)

48.'  $30.81 - 4.584$   
 $= 26.226$  Choice (2)

49.  $184.6 + n = 300$   
 $\Rightarrow n = 115.4$  Choice (1)

50.  $5339 + n = 562$   
 $\Rightarrow n = 5339/562 = 9.5$  Choice (5)

'51.  $1024 + \sqrt{n} - 529 = 536$   
 $\Rightarrow \sqrt{n} = 536 - 49,5$   
 $n = (41)' = 1681$  Choice (4)

52.  $168.- 6 = 28$  Choice (5)

53.  $348 - 44 = 344$  Choice (1)

54.  $7026 - 11 = 4844$   
 $\Rightarrow n = 2182$  Choice (3)

55.  $61 \ 10 + 4 = 61 \ 14$  Choice (2)

56. Let their ages be  $T_n, 3n$  respectively  
 $\Rightarrow 7n + 9 = 4y$   
 $\Rightarrow 3n - 9 = 3y$

On solving equations,  $n = t$ :

Hence the present ages are 7,3 years of Shauna and Imam resp. Choice (3)

57.  $3/7 \times 266 = 114 \ 7$   
 $4/9 \times 504 = 224$   
 $224 - 114 = 110$  Choice (5)

**Increase your score by 20 marks with CETking - Workshops | Mocks**

SNAPking - First coaching institute dedicated for SNAP by SIBM, JBIMS alumni and students  
Try our free workshop with JBIMS topper to feel the difference Call now 9820500380  
SNAPking Workshops • SNAPking Mocks • CETking Workshops • CETking Mocks • GDPI Clinic  
For details log on to [www.cetking.com](http://www.cetking.com) or Call 9820500380 Andheri • Vashi • Thane • Pune

58.  $x+2x/y+3y=5/12$   
 $\Rightarrow 3x/4y=5/12, x/y=5/12 \times 4/3=20/36=5/6$  Choice (2)
59. Profits are divided in the ratio of investment and time period for which it is invested, ~  
48000 x 12 is for sumant and  
56000 x 6 is for Maurya  
Their investment are in ratio 5 : 3,  
hence the difference in profit is Rs. 4875. Choice (4)
60. Sweets with each student = 15  
No. of students == 75  
Total sweets = 1125 Choice (3)
61.  $23958 == 18000 (1+r/100)^3$   
 $1.331 == (1+r/100)^3$   
 $q = 10\%$   
 $5.7 = 18000 \times 10 \times 3/100 = \text{Rs.}5400$  Choice (2)
62. 246 is the number Choice (5)
63.  $4/9 \times 4540 = 2017.7$   
 $\sim 45\% \text{ of } 2017.7 = 908$   
 $\sim 25\% \text{ of } 908 = 227$  Choice (4)
64. Let the ratio be 3n, 7n, 9n, Bn.  
 $\sim 7n-3n=9180$   
 $\sim 4n = 9180, n = 2295$   
Share of A and C =  $3n + 9n = 12n = 12 \times 2295 = 27540$  Choice (1)
65.  $1/7 \times n = 48$ .  
 $\sim n = 336$ ,  
 $72\% \text{ of } 336 = 241.92$  Choice (1)
66. Choice (4)
67. Choice (5)
68. Choice (5)
69. 60 is wrong in series Choice (5)
70. Choice (3)
71. Choice (5)
72. Choice (5)
73. Choice (2)

**Increase your score by 20 marks with CETking - Workshops | Mocks**

SNAPking - First coaching institute dedicated for SNAP by SIBM, JBIMS alumni and students  
Try our free workshop with JBIMS topper to feel the difference Call now 9820500380  
SNAPking Workshops • SNAPking Mocks • CETking Workshops • CETking Mocks • GDPI Clinic  
For details log on to [www.cetking.com](http://www.cetking.com) or Call 9820500380 Andheri • Vashi • Thane • Pune

**CETking Challenge – Can you solve all these questions with shortcuts!!  
Call JBIMS toppers now and we will increase your score on phone only - 9820500380**

74. Choice (3)
75. Choice (1)
76. . 75 and 45 are the no. of students enrolled for the two activities of sculpture making and book binding.  
75 : 45 = 5 :3      Choice (3)
77. 427 is the total number of students in 7 years, and the average is 61..      Choice (4)
78. 79 students are enrolled-in flower arrangement, and 85 are enrolled in wall ranging. 79 of 85 is about 93%      Choice (5)
79. 427 ~ candle making  
456- wall ranging  
and the difference is 29      Choice (5)
80. Average number of student in book binding is 59 and for flo~er arrangement is 65, the difference is 7.      Choice (2)
81. Choice (5)
82. Number of candidates from Delhi is 37.5 and from all other cities together is 137.  
It is around 27.3%      Choice (5)
83. No. of candidates from Pune, Kolkata, Murnai = 77 and no. of candidates from Baroda, Delhi, Varanasi = 101.  
The ratio is 10.13      Choice (1)
84. The ratio of candidates is 3 : 4      Choice (1)
85. Average number of students together is 29167.      Choice (3)

Solutions for 86 to 90

The final distribution of the employees are Total = 22560

Men = 13160

Women = 9400

Departments	Male	Female	Total
Administration	5264	1504	6768
Receiving and Despatch	940	1880	2820
Personnel	'1974	1158	3132

**Increase your score by 20 marks with CETking - Workshops | Mocks**

SNAPking - First coaching institute dedicated for SNAP by SIBM, JBIMS alumni and students

Try our free workshop with JBIMS topper to feel the difference Call now 9820500380

SNAPking Workshops • SNAPking Mocks • CETking Workshops • CETking Mocks • GDPI Clinic

For details log on to [www.cetking.com](http://www.cetking.com) or Call 9820500380      Andheri • Vashi • Thane • Pune

Accounts	1380	2820	4200
Vigilance	1910	1474	3328
IT	1692	564	2256

86. Choice (2)
87. Choice (4)
88. Choice (1)
89. Choice (3)
90. Choice (5)
91. IX class has the maximum number of students, i.e. 480. Choice (3)
92. Choice (2)
93. Class VII ,has 468 pass students, class VIII has 414 pass students. Hence, the ratio is  $468:414 = 26:23$  Choice (1)
94. Class IX has 55 fail students, class VI has 60 fail students.  
The ratio is  $55 : 60$  for  $11:12$ . Choice (5)
95. Choice (5)
96. Clearly by statement A, the age of Shanti can be known easily, while statement B is not enough to answer. Choice (1)
97. Both the statement are together required the answer the question. The number formed is 828. Choice (3)
98. Statement A alone is sufficient, but as statement B does not give time period, rate of interest could not be calculated. Choice (1)
99. Both statements are required to get the answer. Choice (3)
100. Statement B is alone sufficient, but as statement A does not give the ratio of capacities of men and women it is not sufficient. Choice (2)
101. L is the only one such letter Choice (2)
102. H, \$, M comes after a gap of 4 elements, hence next should be # similarly next should be 2 and then should be A # 2A Choice (1)
103. The eleventh element than will be m, and the sixth element to the eight will be L Clearly F%.M does not follow the same pattern as the other options follow. Choice (3)
104. Choice (5)

**Increase your score by 20 marks with CETking - Workshops | Mocks**

SNAPking - First coaching institute dedicated for SNAP by SIBM, JBIMS alumni and students  
Try our free workshop with JBIMS topper to feel the difference Call now 9820500380  
SNAPking Workshops • SNAPking Mocks • CETking Workshops • CETking Mocks • GDPI Clinic  
For details log on to [www.cetking.com](http://www.cetking.com) or Call 9820500380 Andheri • Vashi • Thane • Pune

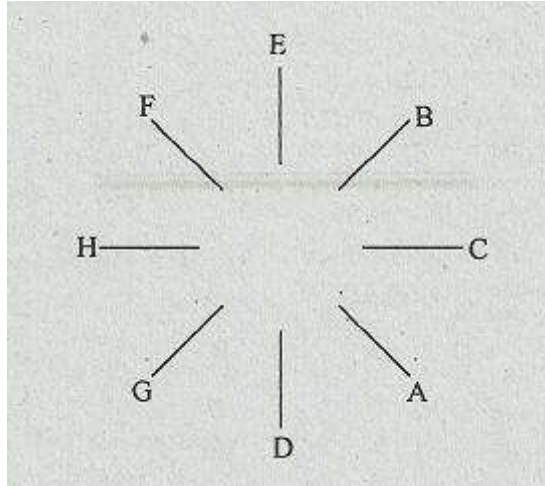
105. 1, 5, 4, 8 hence there are 4 such numbers    Choice (5)
106. DISPLAYED  
SP, ED, IL, are the three such pairs    Choice (4)
107.    Choice (2)
108.    Except 87 all are prime numbers    Choice (5)
109.    A is the mother in-law-of C.    Choice (1)
110. 450 - 319 + 11 + 17 x 6' Applying BODMAS  
450 - 29 + 102  
= 552 - 29 = 523    Choice (2)
111.    None of the given conclusions' follow.    Choice (5)
112.    Choice (1)
113.    Choice (5)
114.    Choice ( )
- 115.
116.    Choice (3)
117.    Choice (4)
118.    Choice (2)
119.    Choice (2)
120.    Choice (1)
121.    It is by combining the two statements, the number of children in the row can be calculated.  
Choice (5)
122.    Data in the first statement is enough to get the code for the word 'she'    Choice (1)
123.    The data in both the statements are sufficient to answer.    Choice (3),
124.    The data in both the statements combines to give the answer the question Choice (5)
125.    The data in both the statement above are able to answer the questions.    Choice (3)

**Increase your score by 20 marks with CETking - Workshops | Mocks**

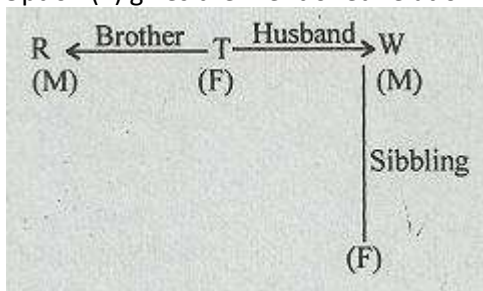
SNAPking - First coaching institute dedicated for SNAP by SIBM, JBIMS alumni and students  
Try our free workshop with JBIMS topper to feel the difference Call now 9820500380  
SNAPking Workshops • SNAPking Mocks • CETking Workshops • CETking Mocks • GDPI Clinic  
For details log on to [www.cetking.com](http://www.cetking.com) or Call 9820500380    Andheri • Vashi • Thane • Pune

Solutions for 126 to 130

The correct position of the eight executives are



- 126. E is both 4th from the right left of D      Choice (5)
- 127. C sits between A and B                      Choice (2)
- 128. H sits between G and F                      Choice (1)
- 129.    Choice (2)
- 130. GF is different from other four arrangements      Choice (3)
- 131. 569 will be largest                              Choice (1)
- 132.    Choice (1)
- 133. The order of the numbers will be  
 358    495    569    639    834  
 The fourth number will be 639.                      Choice (3)
- 134. Option (2) gives the mentioned relation



- 135. Clearly F is the niece of L. 136. Choice (4)

**Increase your score by 20 marks with CETking - Workshops | Mocks**

SNAPking - First coaching institute dedicated for SNAP by SIBM, JBIMS alumni and students  
 Try our free workshop with JBIMS topper to feel the difference Call now 9820500380  
 SNAPking Workshops • SNAPking Mocks • CETking Workshops • CETking Mocks • GDPI Clinic  
 For details log on to [www.cetking.com](http://www.cetking.com) or Call 9820500380      Andheri • Vashi • Thane • Pune



- 136. Choice (1)
- 137. Choice (2)
- 138. Choice (1)
- 139. Choice (4)
- 140. Choice (2)
- 141. Choice (5)
- 142. Choice (3)
- 143. Choice (4)
- 144. Choice (1)
- 145. Choice (1)
- 146. Choice (4)
- 146. Choice (4)
- 147. Choice (3)
- 148. Choice (5)
- 149. Choice (1)
- 150. Choice (1)

**Increase your score by 20 marks with CETking - Workshops | Mocks**

SNAPking - First coaching institute dedicated for SNAP by SIBM, JBIMS alumni and students  
Try our free workshop with JBIMS topper to feel the difference Call now 9820500380  
SNAPking Workshops • SNAPking Mocks • CETking Workshops • CETking Mocks • GDPI Clinic  
For details log on to [www.cetking.com](http://www.cetking.com) or Call 9820500380      Andheri • Vashi • Thane • Pune